


Repeated long-term population growth overshoots and recessions among hunter-gatherers

The Holocene
2023, Vol. 33(10) 1163–1175
© The Author(s) 2023
Article reuse guidelines:
sagepub.com/journals-permissions
DOI: 10.1177/09596836231183072
journals.sagepub.com/home/hol


Jacob Freeman,¹  Raymond P Mauldin,²
Mary Whisenhunt,³ Robert J Hard³ and John M Anderies⁴

Abstract

We propose a model that may explain long-term population growth and decline events among human populations: The intensification of production generates a tradeoff between the adaptive capacity of individuals to generate a surplus of energy to maximize their fitness in the short-run and the long-term capacity of a population as a whole to experience a smooth transition into a demographic equilibrium. The model reconciles the conflicting insights of dynamic systems models of human population change, and we conduct a preliminary test of this model's implications in Central Texas by developing time-series that estimate changes in human population density, modeled ecosystem productivity, human diet, and labor over the last 12,500 years. Our analysis indicates that Texas hunter-gatherers experienced three long-term population growth overshoots and recessions into quasi equilibria. Evidence indicates that each of these overshoots and recessions associate with changes in diet and labor devoted to processing high density, lower quality resources to unlock calories and nutrients. Over the long-term, population recessions may be necessary for populations to experiment with social and physical infrastructure changes that raise the carrying capacity of their environment.

Keywords

adaptive capacity, economic behavior, human population ecology, vulnerability

Received 18 August 2022; revised manuscript accepted 19 May 2023

Introduction

Recent advances in the analysis of archeological radiocarbon now shed light on the long-term growth and decline of human populations throughout the Holocene (e.g. Bird et al., 2020; Brown and Crema, 2021; Freeman et al., 2018a, 2021a, 2021b; Kelly et al., 2013; Lima et al., 2020; Palmisano et al., 2019; Robinson et al., 2013, 2021; Shennan et al., 2013; Tallavaara and Seppä, 2012; Timpson et al., 2014; Zahid et al., 2016). Yet, despite these advances, as well as decades of modeling (e.g. Anderies, 1998, 2003; Brander and Taylor, 1998; Cohen, 1995; Lee and Tuljapurkar, 2008; Meyer and Ausubel, 1999; Puleston and Winterhalder, 2019; Puleston et al., 2014; Richerson and Boyd, 1998; Richerson et al., 2009; Wood, 2020), explanations that link the long-term growth and decline of human populations, economic behavior, and climate throughout the Holocene remain contested (Puleston and Winterhalder, 2019). In this paper, we contribute to understanding the interactions between population, economic behavior, and climate by proposing an Adaptive Capacity Tradeoff Model of population change among hunter-gatherers. We describe how the model reconciles the conflicting insights of dynamic systems models of human population change, and we conduct a preliminary evaluation of the model in Central Texas, generating hypotheses for future research.

An adaptive capacity tradeoff model

The Adaptive Capacity Tradeoff Model builds on the insights of a set of dynamic systems models that we call Malthus-Boserup

models of human population growth. Malthus-Boserup models of human population growth all include three principles (e.g. Anderies, 1998, 2003; Cohen, 1995; Freeman et al., 2021b; Lee and Tuljapurkar, 2008; Lee et al., 2009; Meadows et al., 1972; Meyer and Ausubel, 1999; Puleston and Tuljapurkar, 2008; Puleston et al., 2014; Puleston and Winterhalder, 2019; Richerson and Boyd, 1998; Richerson et al., 2009; Wood, 1998, 2020): (1) Human populations display an amplifying feedback in which more individuals beget more individuals. (2) Human populations experience limits in which the competition for resources becomes so costly for individuals that net per capita fitness declines. (3) Human populations may innovate or adopt social and technological means that increase the productivity of their economies and, potentially, escape from limits. The pressure to innovate is defined by a minimum tolerable well-being that is greater than the minimum well-being necessary for a population to replace itself at a limit (e.g. Freeman et al., 2021b; Lee, 1986; Richerson et al., 2009; Wood, 1998, 2020). Whenever well-being crosses the

¹Anthropology Program, Utah State University, USA

²Center for Archaeological Research, University of Texas at San Antonio, USA

³Department of Anthropology, University of Texas at San Antonio, USA

⁴School of Human Evolution and Social Change and School of Sustainability, Arizona State University, USA

Corresponding author:

Jacob Freeman, Anthropology Program, Utah State University, 0730 Old Main, Logan, UT 84321, USA.

Email: jacob.freeman@usu.edu

minimum tolerable threshold, populations receive signals that might provide incentives for individuals to change how they construct their niche via social and technological means.

Although Malthus-Boserup models share the above principles, disagreement remains about how to conceptualize escapes that raise the limits of a population. First, Richerson et al. (2009) build a model of human population growth that subsumes all potential technological and social changes that might occur into a single parameter. This Boserupian parameter assumes that social and technological changes occur more slowly than population change and in an environment external to that of the modeled population. In their model, populations quickly approach carrying capacity (amplifying feedback), cross a minimum tolerable income threshold (well-being), and then adopt new technology and social forms, as long as the rate of cultural evolution outside the system is high enough. Based on this model, Richerson and colleagues argue that, over thousands of years, a population likely never approaches a population equilibrium. Rather, populations display slow and continuous growth that is proportional to the rate at which innovations raise the productivity of labor and/or land area. As Richerson et al. (2009) state, “we do not expect to see any systematic evidence of increased population pressure immediately before major innovations. Population growth is likely to result from innovations, not the other way around, on the time scales that we normally observe in the archaeological record.” This model raises key questions: Is innovation a constant process occurring as a linear function of the background rate of cultural evolution outside a population system; will individuals adopt any innovations that increase productivity whenever they experience population pressure; or do populations sometimes forgo innovations in favor of short-term fixes that entail tradeoffs?

Second, Wood (1998) proposes a ratchet model of human population growth. In Wood’s model, again, populations experience amplifying feedback, and this drives a system into a zone of population pressure. In this zone of population pressure, individuals have an incentive to adopt a new production system (collection of interacting social and technological traits) that expands the carrying capacity of an environment and leads to long-term population growth. So far, this is very similar to Richerson and colleagues’ model. However, there is a key difference. Wood uses the metaphor of a ratchet to describe the process of change in production systems. Rather than modeling innovation as proportional to a background rate of cultural evolution outside the population system and assuming that individuals will adopt *any* innovation that raises their well-being, the ratchet model proposes that changes in production systems display path dependence and diminishing returns.

Path dependence means that past changes in the production of resources have an inertia that constrains future changes. Diminishing returns, in this case, means that successive changes in production along a path dependent trajectory provide smaller and smaller increases in surplus production. To convey this process, Wood (2020) imagines the adoption of rice agriculture. At first, the adoption of shifting rice agriculture and associated changes in technology and social organization (e.g. storage, labor pooling) significantly increase the surplus production of a population. In turn, population grows and, eventually, population pressure induces individuals to shorten their fallow periods. Shortening fallows increases surplus production, and population, again, grows toward a new limit. As population density approaches the new limit, population pressure, again, provides an incentive for the construction of rock walls and tenure arrangements that isolate plots of land. Finally, isolated plots become wet rice paddies. Each successive change in this scenario builds upon previous landscape and institutional modifications (path dependence) and provides less and less increase in surplus production (diminishing returns). As Wood (2020) states, “As innovations accumulate, they may progressively narrow the field of further development

and lead eventually to extreme specialization and little capacity for further change.” In short, a convergence of limits in the population and production systems that we call calcified (specialized and difficult to change).

To evaluate the plausibility of the MaB Ratchet model among hunter-gatherers, Freeman et al. (2021b) use approximately 1700 radiocarbon ages to create calibrated summed probability distributions (SPDs) in Central Texas. They then used loglet analysis to fit summed logistic models to the SPD of Central Texas, and the best fitting model contained three components of growth. Based on these results, Freeman et al. (2021b) proposed that the exponential shape of the SPD observed in Central Texas over 12,500 years results from three successive waves of large social and technological changes that created new production systems. In subsequent work, Freeman and colleagues attempted to test whether increases in estimated population from 8400 to 400 cal BP were driven by changes in technology and social organization related to resource extraction or climate changes that increased the productivity of Central Texas ecosystems. Their analysis indicates that, over 8000 years, changes in technology and social organization that increased the proportion of biomass extracted from ecosystems had a larger effect on increases in carrying capacity than changes in climate that impact the productivity of ecosystems (Freeman et al., 2023b). However, this result is so coarse grained that it does not distinguish between the population dynamics proposed by Richerson et al. (2009) and Wood (1998, 2020). Did Central Texas hunter-gatherers incrementally increase their carrying capacity over time, never entering into a Malthusian equilibrium where the limits of the population and production systems converged; or did populations and economies co-evolve along the trajectory imagined by the MaB ratchet? These questions remain unanswered.

Finally, both of the above models and the analysis of Freeman and colleagues assume that human populations experience smooth, continuous growth and, potentially, smooth transitions into population equilibria over the long-term. However, a third set of Malthus-Boserup models suggests that populations may experience cycles of growth and decline due to behavioral plasticity—the ability of individuals to adjust levels of labor and per capita resource extraction in response to immediate circumstances rather than waiting for slower evolutionary processes. For example, Anderies (2003, 1998) models the carrying capacity of agricultural economies from the bottom-up as a function of food independent and food dependent fertility and mortality. A basic insight derived from these models is that fast changes in labor that increase the productivity of agriculture creates population and ecosystem instability. Human populations do not find a stable population equilibrium but oscillate, often experiencing long-term population growth overshoots followed by recessions (Anderies, 1998, 2003). Behavioral plasticity generates this behavior by weakening the feedback between the state of a resource base and fertility and mortality. This means that crossing a minimum level of well-being that provides an incentive for changing a production system may not occur before the resource base degrades (see also Puleston et al., 2014). Because of the non-linear dynamics of ecosystems, this delay in feedback between fertility, mortality, and how quickly resources decline often results in a population overshoot and recession limit cycle: Long slow population increase followed by rapid decline of population and recovery of the resource, and, again, population increase (e.g. Anderies, 1998). These insights raise the question of under what conditions populations will respond to declines in well-being by focusing on behavioral adjustments in the short-run versus adopting/innovating major changes in their production system?

In sum, previous Malthus-Boserup models of human population growth suggest three potentially conflicting insights. Over thousands of years, (1) populations may experience continuous,

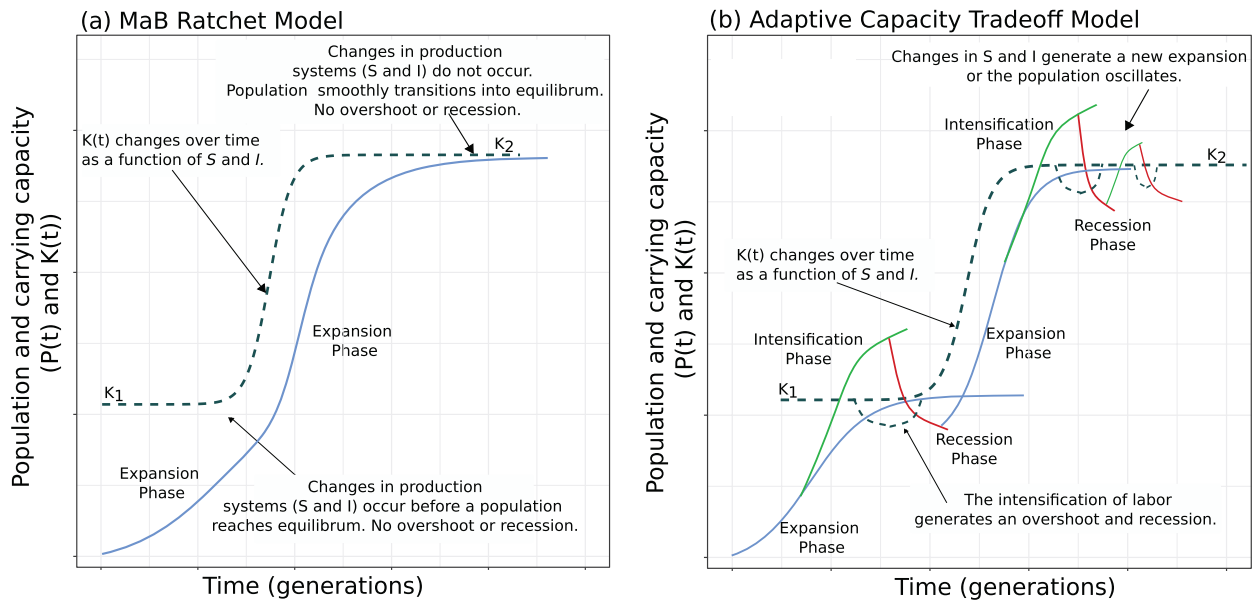


Figure 1. Proposed population dynamics. (a)-The Original MaB Ratchet Scheme following Wood (1998) and Freeman et al. (2021b). $P(t)$ is population size at time t in a fixed area. As noted in the text, $K(t)$ is the size of a population's limit at time t . (b)-The Adaptive Capacity tradeoff model. In this model, S and I determine the carrying capacity of populations over thousands of years. However, near the convergence of limits in $K(t)$ and $P(t)$, the population displays instability generated by the coupling of changes in labor and the growth dynamics of ecosystems. Note how $K(t)$ declines slightly and population follows. As population decline releases pressure on ecosystems, $K(t)$ increases and, again, so does population.

incremental growth, limited only by the background rate of cultural evolution of production systems, or (2) populations may experience repeated cycles of long-term population growth driven by large changes in production systems followed by periods of saturating growth as the limits of production and population systems converge. (3) Over hundreds of years, holding a production system constant, behavioral plasticity might generate population overshoots and recessions by weakening the feedback signals from a resource base to a population's fertility and mortality—the very same signals that are supposed to create incentives for innovations in the models proposed by Richerson et al. (2009) and Wood (1998, 2020). To help make progress on understanding these processes, we propose a graphic model that reconciles insights (2) and (3) and provides testable hypotheses that may allow researchers to distinguish between insights (1) and (2) among hunter-gatherers.

The model

The Adaptive Capacity Trade-off model proposes that, at minimum, we can write the change in a population's limit over time as: $K(t) = f(X_e, L, S, I)$; where X_e is the productivity of ecosystems in an area; L is the labor devoted to extracting resources from ecosystems; and S and I are the social organization of resource tenure and inheritance and the physical infrastructure used to capture resources from ecosystems. Following Anderies (1998), X_e and L most impact population dynamics at a time-scale of decades to hundreds of years. These two variables impact the resources harvested per unit area holding S and I constant. As L increases, populations intensify in the classic Boserupian sense by trading lower per capita returns for more food per unit area (Boserup, 1965). Following the insights of Wood (1998, 2020), we assume that over centuries to thousands of years, the cultural evolution of S and I and the adoption of innovations in these domains often control the yield per person of production systems and, thus, the density of human populations. Importantly, we assume that changes in S and I display path dependent and diminishing returns. When this occurs, it is not obvious that human actors will always smoothly adopt new forms of S and I

that transform a production system or smoothly transition into a long-run equilibrium.

Following Anderies (1998), we propose that, especially in settings with fewer resource options, as changes in production systems calcify, human actors will double down on intensifying their extraction of existing resources. This means that foragers will increase their labor (L) invested per unit area as a substitute for long-term changes in S and I . As a consequence, whenever the limits of production and population systems converge, human populations experience an Adaptive Capacity Tradeoff. This tradeoff occurs because increasing labor provides a temporary evasion of a resource limit but makes a population vulnerable to recessions due to the coupled dynamics of resources and populations.

For instance, consider the following Central Texas inspired scenario. Upon the initial occupation of Central Texas, foragers primarily harvested large to medium sized animals, say, hypothetically, for 60% of their diet from meat. Such a strategy requires a larger area per person because animals are a high quality, mobile, and sparse resource (Binford, 2001; Kelly, 2013), and, thus, have a lower limit where competition for resources impacts well-being. Over decades to centuries, foragers can adjust to declines in hunting returns by simply hunting more days and taking more animals per hunting trip. This adjusts L , impacts X_e , and changes a mean forager's return rate. As population increases over decades to centuries, population pressure as described by Wood (1998) and Freeman et al. (2021b) should lead to a long-term growth process over centuries to millennia, that looks like Figure 1a. Upon entering the environment, foragers initially innovate new hunting technologies, information sharing networks, landscape modification, etc. that make hunting more productive per person, but these innovations calcify over time (the blue curve approaches the dashed curve at K_1 in Figure 1a). As this occurs, pressure to innovate new production systems via changes in S and I occur before people intensify their harvest of game so much that resources deplete and the population oscillates. For example, under such pressure foragers might adopt large earth ovens to bulk process plants and shift their diet from 60% to 40% meat, on average, requiring less area per person to live and

reproduce. Thus, in the MaB Ratchet, $K(t)$ is controlled by S and I and one assumes that the effects of X_e and L are very small relative to S and I over centuries to millennia. Populations either display a smooth transition from one growth regime to the next or a smooth transition into an equilibrium.

In contrast, Figure 1b illustrates the Adaptive Capacity Tradeoff model. In this model, S and I , again, control $K(t)$ over centuries to thousands of years. However, unlike in Figure 1a, we propose that as S and I approach a limit, the dynamics of X_e and L become large relative to the dynamics of S and I . This means that a population system becomes much more controlled by behavioral plasticity and ecosystem dynamics rather than long-term, cultural evolutionary changes in S and I . At this convergence of limits, the dynamics of classic bioeconomic models, such as those proposed by Anderies (2003, 1998), become highly relevant. At the convergence of limits, foragers face a well documented tradeoff between increasing labor to maintain a robust supply of food in the face of increasing population density and the vulnerability of a population to declines driven by resource degradation (e.g. Anderies, 1998; Anderies et al., 2019; Anderies, 2006; Barfuss et al., 2018; Carpenter et al., 2015; Freeman and Anderies, 2012; Freeman et al., 2015, 2019; Noy-Meir, 1975; Pulleston et al., 2014; Winterhalder et al., 1988).

This trade-off dynamic is illustrated in Figure 1b by coupled fluctuations of population ($P(t)$) and carrying capacity ($K(t)$). In this case, as the production system focused on animals calcifies, people double down on their existing information networks, hunt more, and move more often (e.g. Freeman et al., 2019), generating a population overshoot and recession. It is critical to note that just as behavioral plasticity can cause an overshoot, plasticity in the form of migration can also arrest the decline. The severity of the decline and speed of population recovery depends upon the ratio of resource consumption to resource regeneration (Anderies, 1998). As mortality outstrips fertility and people emigrate, resources recover, and, thus, population stabilizes and may begin to grow. Note, in Figure 1b innovations in S and I , such as adopting earth ovens as part of shifting to an economy that requires less area per person, comes out of the recession and oscillation around a production system's long-term limit, not prior. This is quite different from previous Malthus-Boserup assumptions about periods of innovation pressure.

The Adaptive Capacity Tradeoff Model makes several predictions that differ from the original MaB Ratchet. (P1) In the original MaB Ratchet, we can model the expansion of $K(t)$ as a logistic process in which population expands slowly, rapidly, and then slowly again. This results from the fact that changes in S and I that make a system more productive slow through time as a production system calcifies. Thus, over thousands of years, population size follows the expansion dynamics of the limit. In the Adaptive Capacity Model, we should see systematic deviations from this logistic process. As illustrated in Figure 1b, during the Expansion Phase population should grow quickly. However, in the Intensification Phase rather than population growth slowing, the population curve should deviate from the standard logistic in two ways. (a) Populations should increase much more than the logistic model would predict, overshooting the logistic limit. (b) If foragers experience a degradation in their resource systems due to intensification, then, unlike the logistic model, there should be a recession of population after its peak into a lower population density that potentially oscillates around a quasi equilibrium.

(P2) The MaB Ratchet predicts that within a component of growth, we should observe positive, diminishing returns in resource production followed by a large increase in resource production between components of growth. As noted, among hunter-gatherers in terrestrial ecosystems, shifting toward economies based on plants lowers the area necessary per person to live and reproduce. Thus, we should observe an increased consumption of

plants and then a leveling off of increasing plant consumption within components and an overall increase in plant consumption between components. In the MaB Ratchet case, labor and ecosystem productivity should always have a much smaller effect on resource extraction than changes in S and I that impact the production of plant resources and, thus, may be treated as negligible. In contrast, the Adaptive Capacity Tradeoff Model predicts that within a component of growth we should observe positive, diminishing returns in resource production and then negative changes in resource production as a population moves into a quasi equilibrium. The key here is the effect of behavioral plasticity. If a population begins to substitute increases in labor per unit area for changes S and I , the consequence should be a population growth overshoot and then recession. As mortality and emigration reduce consumption, the resource base begins to regenerate higher quality, lower density resources and populations shift back toward these resources. This is a prediction about the relative consumption of dense, low quality resources, not absolute consumption. Further, L should change within components of growth, increasing significantly from predicted Expansion to Intensification Phases, and declining from Intensification to Recession Phases.

(P3) If the population growth–intensification–recession cycle described by the Adaptive Capacity Tradeoff Model drives regular, large population overshoots and recessions into quasi equilibria, then potential phases of overshoot and recession should repeat over time. The repeated growth overshoots and recessions should not always associate with changes in climate that first increase and then decrease the productivity of ecosystems. As noted above, when S and I change very little, population should become more sensitive to external drivers of changes in X_e and L because both processes impact the rate of food regeneration to extraction. If growth overshoot and recession patterns are evidenced and always associate with first a positive and then a negative change in ecosystem productivity, then this would indicate that climate plays an integral role, weakening evidence in support of labor driven adaptive capacity tradeoffs.

Methods

We illustrate how the Adaptive Capacity Tradeoff Model can provide a framework for data collection and analysis among prehistoric hunter-gatherers in Central Texas (for details, see the Supporting Information and Freeman et al. (2023a) for underlying data). To evaluate P1, we collected a large sample of radiocarbon ages on organic materials associated with archeological remains from Central Texas. We assume that the distribution of these ages over time correlates with the distribution of people over time in a fixed area (e.g. Freeman et al., 2018a; Rick, 1987). To use the radiocarbon data, first we cleaned the data to remove geological and paleontological dates, dates without radiocarbon lab IDs, dates without errors reported, averaged dates, and dates without a site ID or site name. This left us with 1700 total radiocarbon ages from archeological contexts in Central Texas.

Second, using the R package rcarbon, we constructed unnormalized summed probability distributions (SPDs) for the 1700 radiocarbon ages to estimate changes in population over the last 12,500 years (Crema and Bevan, 2021). Note, radiocarbon records are subject to several potential biases that may impact the robustness of the assumed link between age frequency and population size, and archeologists have developed models and techniques to control for the biases of sampling intensity, preservation and the non-linear radiocarbon calibration curve (e.g. Crema, 2022; Crema et al., 2017; Crema and Bevan, 2021; Freeman et al., 2018b; Shennan, 2013; Surovell et al., 2009; Timpson et al., 2014; Williams, 2012). To help address these concerns, we constructed all SPDs using 100 year moving means, and we attempted to control for the over sampling of particular archeological sites

by clustering dates by site using the h function ($h=100$) in rcarbon. Both of these procedures smooth the SPD to capture the long-term trend over time and reduce large fluctuations over shorter time-scales induced by calibration and/or biases introduced by site over-sampling. In all cases, we used Intcal2020 to calibrate the radiocarbon ages (Reimer et al., 2020).

Based on previous work by Freeman and colleagues (Freeman et al., 2021b), we divided the last 12,500 years into three potential components of logistic growth (i.e. growth that occurs slowly, quickly, and then slows). This means that we created three separate SPDs for Central Texas and fit three separate logistic functions, which may be summed together to model the total SPD curve. Each SPD and fit logistic function represents a potential component of growth over a segment of the total SPD curve. Component I occurs from 12,500 to 8401 cal BP, Component II from 8400 to 3401 cal BP, and Component III from 3400 to 200 cal BP. In the Supporting Information, Part I we provide robustness checks that fit two and four component logistic models to the entire curve.

After fitting a logistic model to the SPD of each potential component of growth, we divided each component into three potential phases of growth: Expansion, Intensification, and Recession Phases. We predict that the Expansion Phase corresponds with growth in the logistic from a component's initial SPD size until 50% of the fit logistic models' estimated limit, K . Note that 50% of K is where, in theory, increases in the productivity of resource extraction begin to slow down because existing production systems calcify. The key idea here is that intensification based on increased labor mitigates resource depletion after this point, at least for a while (Anderies, 1998, 2003). We propose that the Intensification Phase lasts from 50% of the fit logistic model's K until the peak value of the SPD in a given component of growth. We propose that the Recession Phase lasts from the first decline in the SPD after the peak that crosses the mean of the fit logistic model until a new component of population growth begins.

To assess P1 that the Intensification and Recession Phases exceed the values predicted by a logistic model, we generated random calendar year dates via Monte-Carlo simulation ($n=1000$) and subsequently back-calibrated into ^{14}C ages to generate a null 95% confidence envelope for each component logistic model (Crema and Bevan, 2021). In all three components of growth (e.g. Figure 2 below), the global fit of the logistic model is statistically significant at $p < 0.05$. The null model approach used here is designed to test the null hypothesis that SPD values do not significantly deviate from an underlying demographic model (Crema and Bevan, 2021; Timpson et al., 2014). In this case: We expect the SPD to deviate from the logistic model. SPD values that deviate above or below the confidence envelope may be interpreted as significant deviations from the null expectation of logistic population growth (Crema and Bevan, 2021). If the proposed phases have some merit, then peak population in the Intensification Phases should exceed the mean of the logistic model and confidence envelope. The valley of the proposed Recession Phases should exceed the mean fit of the logistic model, the 95% confidence envelope in each component, and then tend back toward the mean fit of the logistic model.

To assess P2, we analyzed the association between changes in the frequency and surface area of ancient cooking features used to bake plants, human bone isotopes, and the proposed components and phases of population growth. In Central Texas, foragers primarily had access to terrestrial resources, such as: roots, tubers, seeds, deer, bison, and rabbits. Evaluating the Adaptive Capacity Tradeoff Model requires us to track changes in resource production and labor over time, both between phases within suspected components of growth and between components. We assume that in order for foragers in Central Texas to increase their resource production (lowered area needed per person), they must either invest more labor (L) into resource production and/or shift their

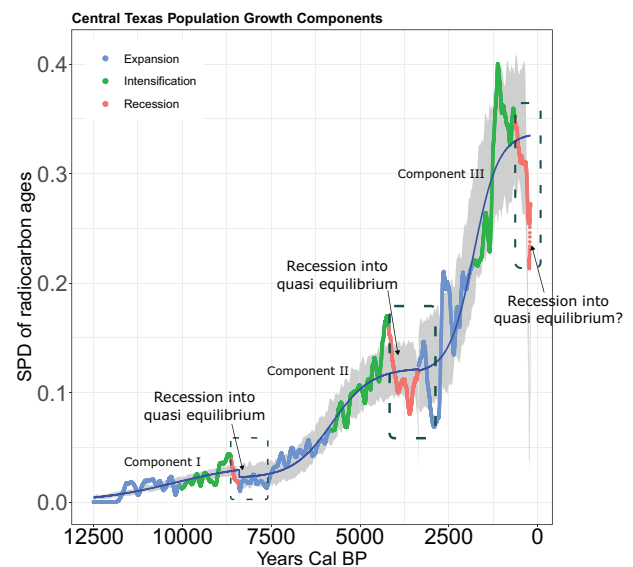


Figure 2. Three components of population growth in Central Texas from 12,500 to 8401 Cal BP (Component I, a 3 parameter logistic), 8400–3401 Cal BP (Component II, a 4 parameter logistic), and 3400–250 Cal BP (Component III, a 4 parameter logistic) first suggested by Freeman et al. (2021b). Gray shaded area is the 95% confidence envelop of each respective logistic model based on 1000 Monte Carlo simulations. Blue, green, and red curves indicate proposed Expansion, Intensification, and Recession Phases within each respective component of growth. Dashed boxes highlight potential quasi-equilibria discussed in the text. Note. Please refer to the online version of the article to view this figure in color.

diet, as a consequence of changes in S and I , toward more plants and fewer large to medium sized animals. The complication is that the same class of archeological data may be impacted by changes in L , S , and I at multiple time-scales.

Two processes may impact the frequency and surface area of ancient cooking features. (1) Holding S and I equal, more L devoted to baking plants should result in more dated features, larger ovens, and more re-use, enlarging feature surface area. We assume that the greater the frequency of FCR features and surface area, the more labor invested in such features to bake resources. (2) Holding L equal, longer-term changes in S and I , such as changes in land tenure to isolate bulb patches from competition and large earth oven sites that promote the growth of bulbs, may increase the consumption of plants, say from 35 to 60% of an average forager's diet. In this case, foragers should construct more oven features and re-use such features more often because they harvest and bake plants in such features for a greater percentage of their diet. The MaB Ratchet would, as discussed above, predict a continuous increase in feature frequency and surface area, both within and between components of growth. The Adaptive Capacity Tradeoff Model, conversely, predicts that we should observe cyclical changes in feature size within components as L first increases and then decreases and a trend of increasing frequency and size between growth components as innovations in earth oven landscapes and land tenure reduce the area necessary per forager to live and reproduce.

We use data on the frequency and surface area of fire-cracked rock features to estimate changes in L devoted to production within growth components and changes in S and I between components. We constructed a database of radiocarbon ages calculated on organic materials from suspected cooking features with fire-cracked rock heating elements and the surface area of these features. These are important classes of data because a greater frequency of such features and surface area both estimate

more labor invested in baking resources that require prolonged heat exposure to unlock calories and nutrients. Ethnographic and experimental evidence indicates that fire-cracked rock is a byproduct of repeated heating events, in this case, baking events (Black et al., 1997; Mauldin et al., 2003; Wandsnider, 1997). Although earth ovens are a general technology that may be used to cook many resources, substantial evidence indicates that the remains of such features in Central Texas were used to cook plants, especially root and bulb species (e.g. Black and Creel, 1997; Mauldin et al., 2003; McAuliffe et al., 2023). Surface area serves as a estimate for the number of fire-cracked rocks (Spearman's $\rho = 0.86$, see Supporting information, Part III) and weight of rocks contained in a feature (Spearman's $\rho = 0.75$, see Supporting Information, Part III). We constructed an unnormalized SPD of the radiocarbon ages associated with cooking features in the R package rcarbon (Crema and Bevan, 2021), smoothing the SPD with a 300-year mean to estimate the frequency of cooking feature use over time. We obtained 450 radiocarbon ages on suspected earth ovens, or large features, and we assume that higher values of the SPD reflects more earth oven construction. To provide an additional line of evidence, based on excavation reports, we calculated the surface area of 303 unique fire-cracked rock features.

Finally, we synthesized previous reports (e.g. Bement, 1994; Bousman and Quigg, 2006; Cargill, 1996; Freeman et al., 2023b; Hard and Katzenberg, 2011; Huebner, 1991, 1994; Mauldin et al., 2013; Quigg, 2000) to construct a database of stable isotopes from human bone on 160 individuals from Central Texas over the last 7800 years cal BP. In Central Texas, changes in isotopes of $\delta^{13}\text{C}$ from bone collagen and apatite, and nitrogen ($\delta^{15}\text{N}$) from bone collagen allow us to track resource use over time. Lower values of $\delta^{13}\text{C}$ from collagen and apatite indicate more use of plants with a C_3 photosynthetic pathway or animals that eat such plants (Hard and Katzenberg, 2011; Mauldin et al., 2013). Changes in $\delta^{15}\text{N}$ allow us to track the trophic position of foragers, with higher values potentially indicating more consumption of large to medium sized animals (high quality, lower density resources) and lower values potentially indicating less use of these resources (see Supporting Information, Part II). Importantly, herbivores in Central Texas show dissimilar isotope values, with bison consuming more C_4 grasses and, thus, displaying higher values of $\delta^{13}\text{C}$ from bone collagen. Humans consuming more bison will, thus, display higher values of $\delta^{15}\text{N}$ and $\delta^{13}\text{C}$ from bone collagen (see Supporting Information, Part III).

As noted above, again, the Adaptive Capacity Tradeoff Model predicts a complex pattern of decreasing values of $\delta^{15}\text{N}$ and $\delta^{13}\text{C}$ between components of growth, reflecting increased production and consumption of plants, fueling long-term increases in carrying capacity. Within components of growth, the model predicts associated declines in values of $\delta^{15}\text{N}$ and $\delta^{13}\text{C}$ from Expansion to Intensification Phases, and increases from Intensification to Recession Phases. Within components of growth, we use a Mann-Whitney U statistic to test the null hypothesis that isotope values in Expansion and Intensification Phases of Components II and III come from the same distribution of values, and we conduct the same analysis comparing the Intensification and Recession Phases of Components II and III. We set $p < 0.1$ as sufficient evidence to reject the null hypothesis.

To assess P3 we constructed time-series of modeled net primary productivity (NPP) and calculated the association between changes in modeled NPP and proposed phases of population growth. To calculate modeled NPP, we used PaleoView (Fordham et al., 2017) to estimate mean annual temperature and precipitation in Central Texas. PaleoView generates outputs from the TRaCE21ka experiment (Liu et al., 2009, 2014; Otto-Bliesner et al., 2014), a Community Climate System Model, version 3 (CCSM3), and a global coupled atmosphere-ocean-sea ice-land

general circulation model (AOGCM) with 3.75° latitude-longitude resolution on land. To estimate NPP, we generated datasets that estimate temperature and rainfall every 50 years over the past 12,500 years for one 2.5° raster square over Central Texas. We then used the Miami model to convert the temperature and precipitation estimates into NPP estimates (Lieth, 1973) at 50 and 200-year time-steps. Importantly, we assessed the relationship between modeled NPP values over time, changes in paleoclimate, and paleoecological records (see SI Part II). The modeled NPP values, paleoclimate, and paleoecological syntheses in Central Texas (Cordova and Johnson, 2019; Wong et al., 2015) show a remarkable association. In particular, changes in precipitation control shifts from more productive mixed grassland and woodlands to less productive C_4 grasslands (Cordova and Johnson, 2019) well described by the modeled NPP values.

Next, we calculated the mutual information of the modeled NPP time-series and a smoothed SPD, summing the SPD and modeled NPP into 50-year and 200-year bins (Freeman et al., 2018a) (see SI Part II for details on the mutual information calculation). Mutual information provides a method for calculating the association between fluctuations or the rhythm of time-series, and is appropriate when assessing the association between non-linear series of discrete and noisy data (Cazelles, 2004; Freeman et al., 2018b). We also calculated Spearman's associations between the 50-year sums of modeled NPP and the SPDs by proposed components and phases of growth. For example, we calculated the association between modeled NPP and SPD values during the Component I, Expansion Phase, Component II, Expansion Phase and so on. This provides a complementary measure of association to mutual information at longer time-scales.

Results

Inferred population trends

Figure 2 illustrates logistic models and confidence envelopes fit to three potential components of population growth in Central Texas. In this figure, predicted Expansion, Intensification, and Recession Phases are colored blue, green, and red. Figure 2 documents evidence mostly consistent with P1.

First, in all three components of population growth, the peak of the predicted Intensification Phase (green curve) exceeds the confidence envelope (gray shaded area) of each null logistic model. These redundant patterns of population increase above what one would expect from a logistic model support P1: Intensification may extend population growth and temporarily evade a population limit. Second, in the first two components of growth, the SPD of the proposed Recession Phase transcends the bottom of the 95% confidence envelope of each respective logistic model. In Component III (Figure 2), although the predicted Recession Phase does display decreasing SPD values, these values do not transcend the 95% confidence envelope. These patterns partly support P1, that a significant population overshoot driven by intensification would be followed by a recession into a quasi-equilibrium.

Finally, the SPD in Component I (Figure 2) often transgresses the confidence envelope of the logistic model. In Component II, the SPD transgresses the confidence envelope three times, and in Component III the SPD transgresses the confidence envelope four times. Clearly, the SPD may transgress the confidence envelope for reasons other than intensification extending population growth above a social and technological limit and subsequent recession. However, we do observe significant deviations, repeatedly, associated with predicted Intensification and Recession Phases. More important than individual peaks and valleys is the shape of the curve. For example, at 8800 cal BP, the SPD recesses into a period of small oscillations around a constant mean for 1000 years (8800–7800 cal BP). This time period encompasses the Recession

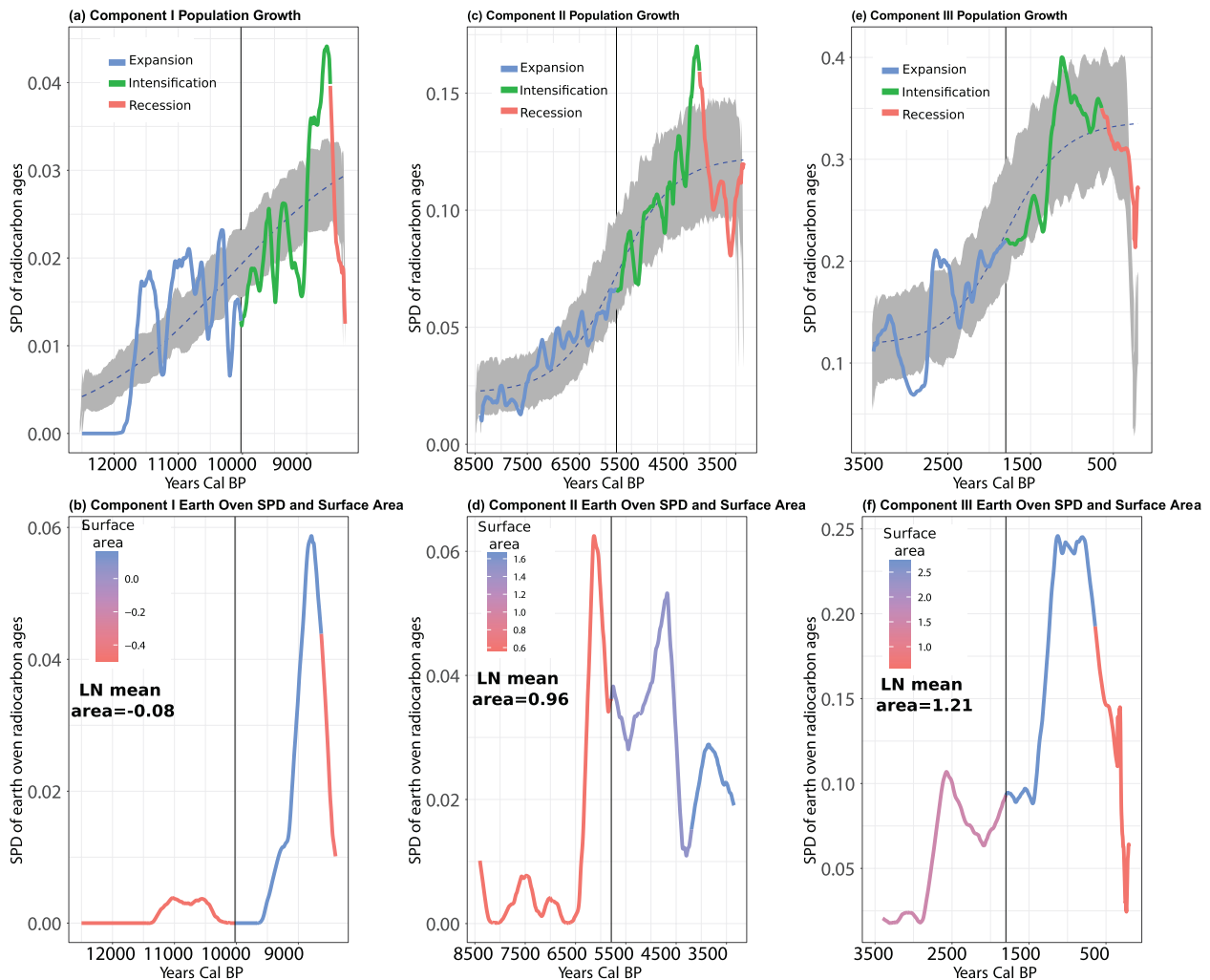


Figure 3. A comparison of population growth, frequency of directly dated suspected earth ovens, and the mean surface area of cooking features by each growth component (Component I: (a and b); Component II: (c and d); Component III: (e and f). In (b, d, and f), red = smaller features and blue = larger features. Feature surface area is calculated on the log scale in square meters. The SPD of large cooking features and the surface area of all cooking features provide complementary lines of evidence for investment in more labor intensive resource processing. Note. Please refer to the online version of the article to view this figure in color.

Phase of the first logistic component of growth and the very beginning of the proposed Expansion Phase of the second component of growth. In the culture history chronology of Central Texas, the period of 8800 to 7800 coincides with the transition from Late Paleoindian to Early Archaic projectile point technologies (Lohse, 2013; Lohse et al., 2014). The same pattern occurs at the end of Component II and the very beginning of Component III. The Recession Phase of Component II begins at the transition from Middle to Late Archaic technological traditions (4200–4100 cal BP) (Lohse, 2013; Lohse et al., 2014) and oscillates around a constant mean until about 3000 cal BP. The Recession Phase of Component III associates with the end of the Late Archaic Transition Interval (1250–651 cal BP, Austin Phase) and beginning of the Late Prehistoric Toyah (650–300 cal BP) (Lohse, 2013; Lohse et al., 2014). It is, of course, unclear whether the final Recession Phase would have settled into a roughly 1000 year quasi equilibrium because the sequence was truncated by Euroamerican colonialism. Nonetheless, the transitions between Components I and II (8800–7800 cal BP) and II and III (4150–3000 cal BP) look very much like populations oscillating to various degrees around a long-run limit (Figure 2 gray dashed boxes).

Population and resources

Figure 3 illustrates evidence mostly consistent with P2 that foragers display cycles of labor intensification on more dense, but

lower quality plant resources. During Component I, the frequency and surface area of cooking features increases from the Expansion to Intensification Phases and then declines during the Recession Phase (Figure 3a and b). We observe the same pattern during Component III: The frequency and surface area of features increase from the Expansion to the Intensification Phase and then decline during the Recession Phase (Figure 3e and f). During Component II, we observe the expected increase in frequency and surface area from the Expansion to Intensification Phases (Figure 3c and d). However, during the Recession Phase, although the frequency of dated features declines, the surface area increases slightly. Finally, we observe an increase in the frequency and mean surface area of FCR features between components of growth. This indicates an increase in plant production and consumption from Component I to II to III.

Figure 4 illustrates a complex pattern of change both within and between Components I and II of population growth and corroborates the evidence displayed in Figure 3. Within Component II (Figure 4a–d), values of all three isotopes significantly decline from the Expansion to Intensification Phase. This indicates an increased consumption of C_3 plants and less protein during the proposed Intensification Phase. Further, $\delta^{13}C$ from collagen and apatite, as well as nitrogen ($\delta^{15}N$), all increase from the proposed Intensification to Recession Phase. In short, we see a pattern of change that indicates a large shift toward C_3 plants and then a small shift toward more animal protein consumption.

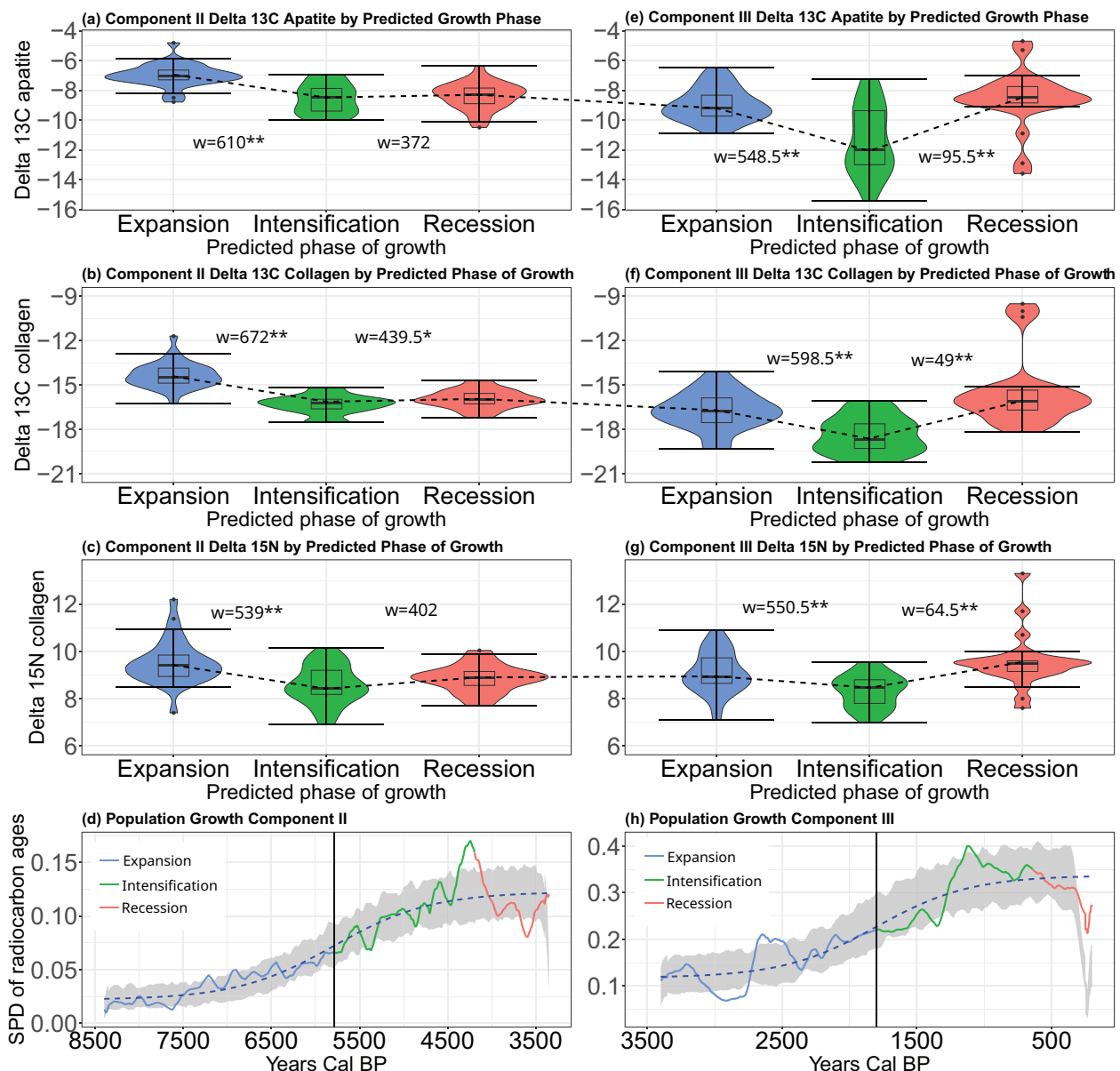


Figure 4. Box and violin plots comparing the distributions of stable isotopes by proposed Expansion (blue), Intensification (green), and Recession (red) Phases in Components II and III of population growth. (a and e)– $\delta^{13}\text{C}$ apatite values in Components II and III, (b and f)– $\delta^{13}\text{C}$ collagen values, (c and g)– $\delta^{15}\text{N}$ collagen values, and (d and h)–Summed probability distributions used to estimate population change in Components II and III, respectively. Vertical reference lines in (d and h) indicate estimated dates at which the fit logistic models reached of 50% of their estimated carrying capacity. W is a Mann-Whitney statistic comparing the distributions of isotope values in Expansion and Intensification and Intensification and Recession Phases, respectively. ** indicates $p < 0.05$; * indicates $p < 0.1$. Dashed lines connect the median isotope values of each successive phase.

Note. Please refer to the online version of the article to view this figure in color.

Within Component III, we observe the same pattern (Figure 4e–h). First, we observe a correlated decreased in all three isotope values from the Expansion to the Intensification Phase, and then a correlated increase of isotope values from the Intensification to the Recession Phase. Within both components, Mann-Whitney U tests indicate that 10/12 paired comparisons are significant at the 0.1 level, with 12/12 comparisons showing the expected direction of difference.

Between components of growth, we observe a step-wise, non-linear pattern consistent with the Adaptive Capacity Tradeoff model. We observe a shift toward more C_3 plants and less protein over the course of Component II, a slight increase in protein consumption and decline in C_3 plant consumption at the transition to Component III, and then another shift toward more C_3 plant and lower protein consumption during the Expansion and Intensification Phases of Component III. The median forager was consuming more C_3 plants and less protein during the Expansion and

Intensification Phases of Component III than they ever did during Component II. This pattern is consistent with a step-wise shift in S and I that enabled the more effective production of energy dense resources that required less area per person between Components II and III.

Modeled NPP and population associations

Figure 5 documents the change in modeled NPP and estimated changes in population, and illustrates an inconsistent association between changes in modeled NPP and the proposed Intensification and Recession Phases. For example, to assess the association between modeled NPP and fluctuations in population during each component, we calculated the mutual information shared by the time-series of NPP and the SPDs in each respective component. In all three components, we find that modeled NPP and SPD time-series do not share mutual information. Further, note the very

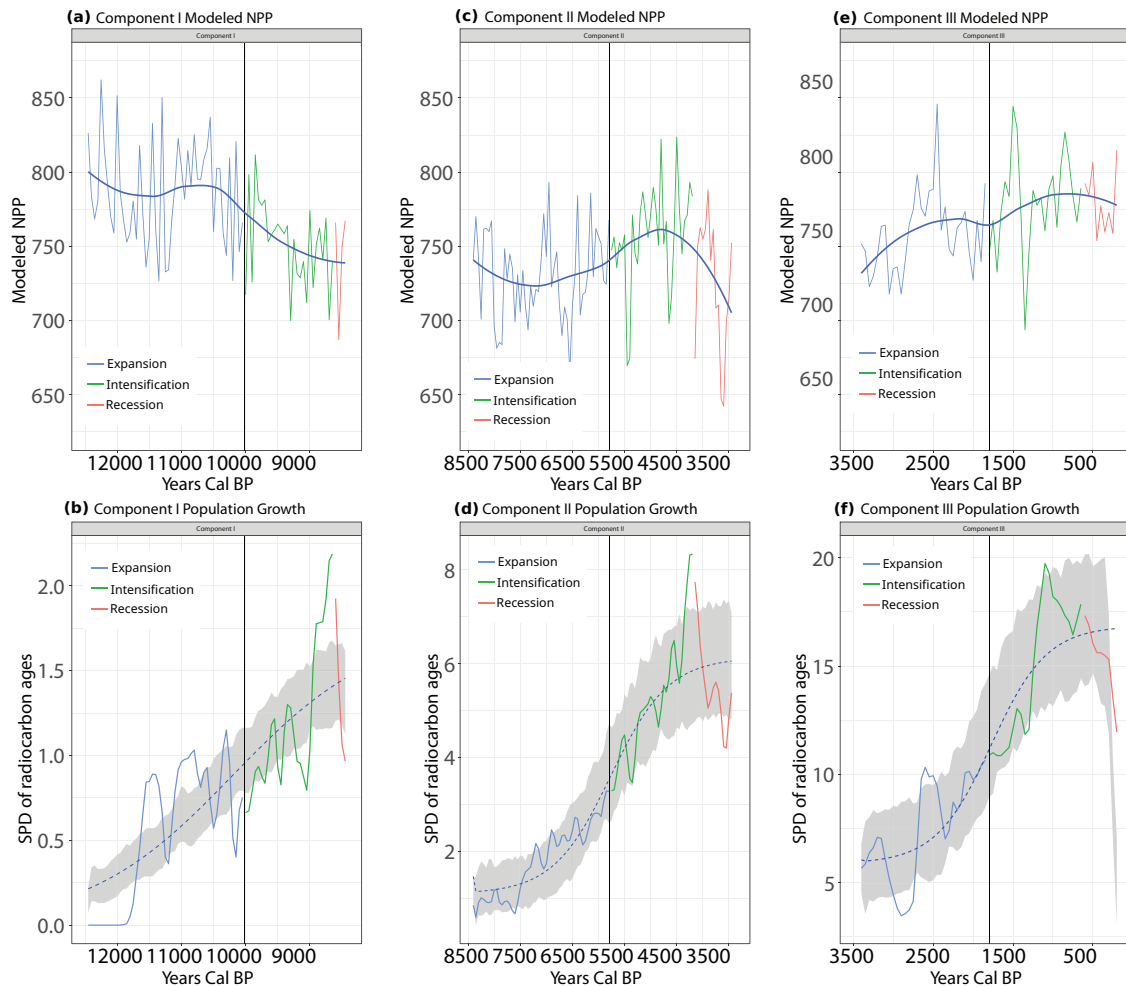


Figure 5. A comparison of modeled NPP (a, c, and e) and population dynamics (b, d, and f) by each growth component. There is no significant association between the rhythm of the modeled NPP and SPDs. There are three significant associations between the long-term trends in modeled NPP and the SPDs. In (a, c and e) loess splines illustrate trends in modeled NPP. Spearman's associations: Component I, Expansion: $\rho = 0.04$; Intensification $\rho = -0.15$; Recession, $\rho = -0.4$; Component II, Expansion: $\rho = 0.05$; Intensification $\rho = 0.37^{**}$; Recession, $\rho = 0.33$; Component III, Expansion: $\rho = 0.43^{**}$; Intensification $\rho = 0.3$; Recession, $\rho = 0.16$. The ** symbol indicates significant at $p < 0.05$.

different trends in the curves when comparing NPP (upper) versus SPD (lower) paired graphs (5a–5b, 5c–5d, and 5e–5f) for each component. In only 3/9 cases do we observe significant Spearman associations: (1) A positive association between modeled NPP and the SPD during the Component II, Intensification Phase; (2) a positive association during the Component III, Expansion Phase; and (3) a weak association during the Component III, Recession Phase.

Figure 5 also illustrates an inconsistent direction of association between modeled NPP and the SPDs. For example, during Component I (Figure 5a and b), the proposed Recession Phase (red curve) occurs after a 1400-year consistent decline in modeled NPP. During this entire 1400-year period, the SPD indicates a growing population during the Intensification Phase, including the expected overshoot. The proposed Recession Phase occurs in conjunction with the bottoming-out of the decline in NPP.

Conversely, during Component II (Figure 5c and d) a long-term increase in modeled NPP of 1100 years correlates with the proposed Intensification Phase (significant and moderately strong association of $\rho = 0.37$), and the proposed Recession Phase associates with a reversal of the trend and decline in modeled NPP at 4200 cal BP (moderate, non-significant association of $\rho = 0.33$). This decline in modeled NPP and the SPD associate with the 4.2K climate aridity event, documented in the Northern Plains of N. America (Booth et al., 2005).

Finally, in Component III (Figure 5e and f) modeled NPP exhibits no trend for the 1000 years prior to the proposed

Recession Phase. Yet, we see the expected overshoot of the logistic null model during this period, and then a decline in the SPD during the proposed Recession Phase coincident with a very small long-term decline in modeled NPP.

In sum, changes in modeled NPP may contribute to the overshoot and recession dynamic observed during Component II. However, there is no clear long-term increase and decline in modeled NPP associated with the end Intensification and Recession Phases in Components I and III. These patterns are consistent with P3: Intensification and Recession Phases repeat over time and do not always associate with changes in climate that would increase the productivity of ecosystems during the Intensification Phase and then decrease the productivity of ecosystems during the Recession Phase.

Discussion and conclusion

In this paper, we contributed to understanding the interactions between population, economic behavior, and climate by proposing a multi-level model of population change among hunter-gatherers. The Adaptive Capacity Tradeoff Model reconciles the conflicting insights of dynamic systems models of long-term human population growth. Specifically, the model proposes that changes in resource production controlled by social organization (S) and physical infrastructure (I) drive human population growth over thousands of years. However, changes in S and I

often become path dependent and production systems calcify. In such situations, the shorter-term dynamics of ecosystems and labor drive the dynamics of human population, and may lead to population overshoots and recessions that shock or shake-up calcified production systems and provide an opportunity for innovation. The Adaptive Capacity Tradeoff model differs from other Malthus-Boserup models by providing a framework for identifying when populations will and will not successfully escape from limits and over what time-scales these processes play out (discussed below).

To build a framework for testing the Adaptive Capacity Tradeoff Model, we conducted a preliminary evaluation of the model's implications in Central Texas. Our analysis indicates that Central Texas hunter-gatherers experienced repeated population overshoots and recessions into quasi-equilibria in the past (Figure 2). These patterns are consistent with the prediction of the Adaptive Capacity Tradeoff Model that human populations experience cycles of population overshoot and recession (P1). We argue that these cycles were, in part, driven by the intensification of labor into extracting resources (Figures 3 and 4). This argument is based on a convergence of multiple lines of evidence, not simply the SPDs used to estimate the shape of the prehistoric population curve.

For instance, consistent with prediction (P2), an examination of earth oven frequency and size (used to estimate labor invested to produce plants) and human bone isotopes (an estimate of shifts in resource consumption) indicates that foragers expended less labor per unit area and consumed more animal protein during proposed Expansion Phases and worked harder and consumed less protein during Intensification Phases (Figures 3 and 4). During proposed Recession Phases, foragers shift their diets back toward more protein consumption and less labor intensive plant resource processing (Figures 3 and 4). Finally, consistent with prediction (P3), in only one of three cases does an increase and decrease in NPP associate, over the long-term, with the overshoot and recession of the SPD into a quasi-equilibrium (Figure 5). This does not mean that climate driven changes in the productivity of resources don't matter; rather, the implication is that we cannot rule out the intensification of labor as the prime driver of the overshoots and recessions.

The convergence of evidence above supports the proposition that the intensification of labor provides a temporary evasion of resource limits when social organization and physical infrastructure remain stable, but also generates population instability. Central Texas hunter-gatherers experienced multiple population growth overshoots and recessions into quasi-equilibria. Some of these, we argue, were driven by the process of individuals intensifying their use of resources to maintain a robust supply of resources in the face of increasing population density rather than adopting innovations. However, this process itself made Central Texas foraging populations more vulnerable to population recessions into quasi equilibria. As several authors argue, this may occur because intensification masks the limits on resource production, for a given set of social and technological conditions (e.g. Anderies, 1998, 2003; Freeman et al., 2019; Puleston et al., 2014).

Though this argument fits the available data, at least three important issues require additional research. We begin with empirical issues, and we end with a discussion the theoretical challenges of Malthus-Boserup models.

First, as with any data, the data used in our analysis have limitations. (1) We do not have human bone isotope data that extend beyond 7800 years cal BP. The practical consequence of this fact is that it is more difficult to estimate changes in resource consumption and diet during the first component of growth (12,500–8401 cal BP). Thus, we cannot corroborate that the increase in earth oven feature frequency and surface area during the

Intensification Phase of Component I correlates with a shift toward more consumption of plants. (2) There is high variation during Component I in the SPD. Thus, what we call the Intensification boom above the confidence envelope and bust below could just be a consequence of the fact that the SPD is more variable due to either sample biases, or the fact that at low population densities population dynamics are more controlled by exogenous factors and less so by endogenous factors. Targeted work on dating fauna assemblages, however, could help with this problem. By tracking the ratio of large to small game in fauna assemblages, researchers can make inferences about encounters and the harvest of large, higher ranked game relative to smaller, lower ranked game by human foragers (Broughton et al., 2011). With targeted work to date fauna assemblages, we could develop a time-series of this ratio that covers the 12,500–8401 time period, and we would expect higher values of this index during the Expansion and Recession Phases relative to the proposed Intensification Phase.

Similarly, the proposed Recession Phase of Component III does not decline into and oscillate around a constant mean for 10–20 generation. This is the only empirical pattern not consistent with P1. This contradiction between the theory and evidence may be caused by an edge effect and how we truncated the radiocarbon ages to cope with the impacts of European Colonialism on populations. This truncation impacts both the SPD and the likelihood of samples used to construct the confidence envelope. It could also just be that the theory does not account for the population dynamics observed in Component III. However, given the sharp declines in cooking feature frequency, surface area, and isotopic evidence of more animal consumption during this proposed Recession Phase, we suspect that a real population decline occurred and was heading into a quasi equilibrium. More comparative work is needed to understand the recurrence of such population growth–intensification–population decline patterns among many sequences.

Second, more work is needed to build higher resolution paleoclimate and environmental records. As noted, the modeled NPP values in Central Texas correspond with the best syntheses of Central Texas paleoclimate and paleoecological records. However, these records only document very long-term trends. A better description of shifts in variability across scales may reveal a stronger role for climate variation in decisions to intensify production (e.g. Finley et al., 2020). Further, we observe an increase and then decrease of modeled NPP associated with estimated population growth and decline during Component II's Intensification and Recession Phases. Thus, changes in the productivity of ecosystems during these phases may have contributed to the overshoot and recession of population relative to a logistic model. Given that NPP, as well as other ecosystem variables, associate with human population densities in the ethnographic record, it is important to consider potential synergies between ecosystem productivity and intensification (e.g. Binford, 1983; Freeman et al., 2020; Luck, 2007; Tallavaara et al., 2018). Climate driven changes in ecosystems should moderate (strengthen or weaken) the severity of population growth and decline dynamics driven by the process of labor intensification. More work is needed on such potential interactions by comparing many case studies of population change and changes in resource use.

Third, the Adaptive Capacity Tradeoff Model attempts to resolve an underlying tension between Malthus-Boserup models of long-term population growth. All such models assume that over thousands of years the limit on human population density is controlled by the organization of tenure and access rights in society and the physical infrastructure and tools used to modify ecosystems. However, it is not clear how or why social organization and physical infrastructure change in particular systems, nor how this process impacts the long-term population dynamics of human societies. Following Wood (1998), our research team proposed

that hunter-gatherers in Texas experienced three periods of long-term population growth driven by changes in social organization and physical infrastructure, such as large earth ovens, that lowered the area necessary per person to harvest food, live, and reproduce (Freeman et al., 2021b). Yet, this argument was nothing more than informed speculation based on fitting summed logistic models to an SPD. We did not address, in any detailed way, whether changes in resource production and climate were consistent with the model. Further, we did not attempt to determine whether transitions from one component of population growth to another were smooth, and whether we could treat changes in climate and labor occurring at faster time-scales as negligible. If humans easily perceive and respond to declines in their well-being as assumed by Richerson et al. (2009) (and somewhat by Wood (1998)), then this might be a reasonable approach. However, if changes in social organization and infrastructure are path dependent and stagnate (Wood, 2020), then people may attempt to compensate by increasing their labor devoted to resource production. The effect of this process is to mask the feedback between resource production, well-being, and fertility and mortality (Anderies, 1998, 2003; Puleston et al., 2014)-the very feedback supposed to create incentives for innovations. Thus, in this paper, we have attempted to develop a model that takes this possibility into account. And our results indicate that overshoots and recessions into quasi-equilibria were critical processes in Central Texas ignored by the MaB Ratchet proposed by Freeman et al. (2021b). Recessions may be critical for periods of major innovation to occur.

Moving forward, we speculate that adaptive capacity tradeoffs are most important in environments where human populations specialize, such as on geophytes in Central Texas, or rice agriculture in Wood's example. Where landscapes become highly managed to produce just a few critical resources over thousands of years, then we expect populations to become much more vulnerable to intensification driven population overshoots and recessions (Freeman et al., 2021a). Conversely, where populations maintain more diverse production systems, then we should expect less path dependence over thousands of years in the cultural evolution of social organization and physical infrastructure. As a consequence, population should not experience population overshoots and recessions, perhaps more easily transitioning to new periods of long-term population growth based on production systems that open new niches. In the end, we find evidence consistent with the Adaptive Capacity Tradeoff Model in Central Texas. More work is needed to develop more refined data sets and more integrated analyses of population, resource use, and climate to test this idea against alternative hypotheses in the future and across archeological regions.

Acknowledgements

The authors would also like to thank the Texas Archaeological Research Laboratory and staff for help accessing samples. This study was also undertaken by JF as part of PEOPLE 3000, a working group of the Past Global Changes (PAGES) project, which in turn received support from the Swiss Academy of Sciences and the Chinese Academy of Sciences.

Funding

The author(s) disclosed receipt of the following financial support for the research, authorship, and/or publication of this article: We are grateful for financial support from the National Science Foundation, grants: BCS-1535841 and IBSS-L:1520308.

ORCID iD

Jacob Freeman  <https://orcid.org/0000-0001-7402-8450>

Supplemental material

Supplemental material for this article is available online.

References

- Anderies JM (1998) Culture and human agro-ecosystem dynamics: The Tsembaga of New Guinea. *Journal of Theoretical Biology* 192(4): 515–530.
- Anderies JM (2003) Economic development, demographics, and renewable resources: A dynamical systems approach. *Environment and Development Economics* 8(2): 219–246.
- Anderies JM (2006) Robustness, institutions, and large-scale change in social-ecological systems: The Hohokam of the Phoenix Basin. *Journal of institutional economics* 2(2): 133–155.
- Anderies JM, Mathias JD and Janssen MA (2019) Knowledge infrastructure and safe operating spaces in social-ecological systems. *Proceedings of the National Academy of Sciences* 116(12): 5277–5284.
- Barfuss W, Donges JF, Lade SJ et al. (2018) When optimization for governing human-environment tipping elements is neither sustainable nor safe. *Nature Communications* 9(1): 2354.
- Bement LC (1994) *Hunter-Gatherer Mortuary Practices During the Central Texas Archaic*. Austin, TX: University of Texas Press.
- Binford LR (1983) *In Pursuit of the Past: Decoding the Archaeological Record*. New York: Thames and Hudson.
- Binford LR (2001) *Constructing Frames of Reference: An Analytical Method for Archaeological Theory Building Using Hunter-Gatherer and Environmental Data Sets*. Berkeley, CA: University of California Press.
- Bird D, Freeman J, Robinson E et al. (2020) A first empirical analysis of population stability in North America using radiocarbon records. *The Holocene* 30: 1345–1359.
- Black SL and Creel DG (1997) The Central Texas burned rock midden reconsidered. In: Black SL, Ellis LW, Creel DG, et al (eds) *Hot Rock Cooking on the Greater Edwards Plateau: Four Burned Rock Midden Sites in West Central Texas*. Studies in Archeology 22. Austin, TX: Texas Archaeological Research Laboratory, The University of Texas at Austin, pp.269–301.
- Black SL, Ellis L, Creel D et al. (1997) *Hot Rock Cooking on the Greater Edwards Plateau: Four Burned Rock Midden Sites in West Central Texas*, vol. 2. Austin, TX: Archaeological Research Laboratory and the Texas Department of Transportation.
- Booth RK, Jackson ST, Forman SL et al. (2005) A severe centennial-scale drought in midcontinental North America 4200 years ago and apparent global linkages. *The Holocene* 15(3): 321–328.
- Boserup E (1965) *The Conditions of Agricultural Growth*. New York: Aldine Publishing Co.
- Bousman CB and Quigg M (2006) Stable carbon isotopes from archaic human remains in the Chihuahuan Desert and Central Texas. *Plains Anthropologist* 51(198): 123–140.
- Brander JA and Taylor MS (1998) The simple economics of Easter Island: A Ricardo-Malthus model of renewable resource use. *American Economic Review* 88: 119–138.
- Broughton JM, Cannon MD, Bayham FE et al. (2011) Prey body size and ranking in zooarchaeology: Theory, empirical evidence, and applications from the northern Great Basin. *American Antiquity* 76(3): 403–428.
- Brown AA and Crema ER (2021) Māori population growth in pre-contact New Zealand: Regional population dynamics inferred from summed probability distributions of radiocarbon dates. *The Journal of Island and Coastal Archaeology* 16(2-4): 572–590.
- Cargill D (1996) *Stable Isotope Analysis at Mission San Juan De Capistrano, San Antonio, Texas*. Master's Thesis, The University of Texas at San Antonio, Department of Anthropology, San Antonio, TX.

- Carpenter SR, Brock WA, Folke C et al. (2015) Allowing variance may Enlarge the safe operating space for exploited ecosystems. *Proceedings of the National Academy of Sciences* 112(46): 14384–14389.
- Cazelles B (2004) Symbolic dynamics for identifying similarity between rhythms of ecological time series. *Ecology Letters* 7(9): 755–763.
- Cohen JE (1995) Population growth and earth's human carrying capacity. *Science* 269(5222): 341–346.
- Cordova CE and Johnson WC (2019) An 18 ka to present pollen- and phytolith-based vegetation reconstruction from Hall's Cave, south-central Texas, USA. *Quaternary Research* 92(2): 497–518.
- Crema ER (2022) Statistical inference of prehistoric demography from frequency distributions of radiocarbon dates: A review and a guide for the perplexed. *Journal of Archaeological Method and Theory* 29: 1387–1418.
- Crema ER and Bevan A (2021) Inference from large sets of radiocarbon dates: Software and methods. *Radiocarbon* 63: 23–39.
- Crema ER, Bevan A and Shennan S (2017) Spatio-temporal approaches to archaeological radiocarbon dates. *Journal of Archaeological Science* 87: 1–9.
- Finley JB, Robinson E, DeRose RJ et al. (2020) Multidecadal climate variability and the florescence of Fremont societies in Eastern Utah. *American Antiquity* 85: 93–112.
- Fordham DA, Saltr   F, Haythorne S et al. (2017) Paleoview: A tool for generating continuous climate projections spanning the last 21 000 years at regional and global scales. *Ecography* 40(11): 1348–1358.
- Freeman J, Baggio JA, Robinson E et al. (2018a) Synchronization of energy consumption by human societies throughout the Holocene. *Proceedings of the National Academy of Sciences* 115: 9962–9967.
- Freeman J, Byers DA, Robinson E et al. (2018b) Culture process and the interpretation of radiocarbon data. *Radiocarbon* 60(2): 453–467.
- Freeman J, Anderies JM, Beckman NG et al. (2021a) Landscape engineering impacts the long-term stability of agricultural populations. *Human Ecology* 49(4): 369–382.
- Freeman J, Hard RJ, Mauldin RP et al. (2021b) Radiocarbon data may Support a Malthus-Boserup model of hunter-gatherer population expansion. *Journal of Anthropological Archaeology* 63: 101321.
- Freeman J, Mauldin R and Hard RJ (2023a) People3k/texas-adaptive_capacity: Adaptcaptradeoff. DOI: 10.5281/zenodo.7757792
- Freeman J, Mauldin RP, Hard RJ et al. (2023b) Hunter-gatherer population expansion and intensification: Malthusian and Boserupian dynamics. Available at: osf.io/preprints/socarxiv/e7rh8. (accessed April 2023).
- Freeman J and Anderies JM (2012) Intensification, tipping points, and social change in a coupled forager-resource system. *Human Nature* 23: 419–446.
- Freeman J, Anderies JM, Mauldin RP et al. (2019) Should I stay or should I go? The emergence of partitioned land use among human foragers. *PLoS One* 14(7): e0218440.
- Freeman J, Peeples MA and Anderies JM (2015) Toward a theory of non-linear transitions from foraging to farming. *Journal of Anthropological Archaeology* 40: 109–122.
- Freeman J, Robinson E, Beckman NG et al. (2020) The global ecology of human population density and interpreting changes in paleo-population density. *Journal of Archaeological Science* 120: 105168.
- Hard RJ and Katzenberg MA (2011) Stable isotope study of hunter-gatherer-fisher diet, mobility, and intensification on the Texas Gulf Coastal Plain. *American Antiquity* 76(4): 709–751.
- Huebner J (1991) Cactus for dinner, again! An isotopic analysis of Late Archaic diet in the Lower Pecos Region of Texas. In: Turpin S (ed.) *Papers on Lower Pecos Prehistory*. Austin, TX: Texas Archeological Research Laboratory, The University of Texas at Austin, pp.175–190.
- Huebner J (1994) Stable carbon and nitrogen isotope analysis of human diets at the Mitchell Ridge Site. In: Ricklis R (ed.) *Aboriginal Life and Culture on the Upper Texas Coast: Archaeology at the Mitchell Ridge Site*, 41GV66. Corpus Christi, TX: Coastal Archaeological Research, pp.406–416.
- Kelly RL (2013) *The Lifeways of Hunter-Gatherers: The Foraging Spectrum*. Cambridge: Cambridge University Press.
- Kelly RL, Surovell TA, Shuman BN et al. (2013) A continuous climatic impact on Holocene human population in the Rocky Mountains. *Proceedings of the National Academy of Sciences* 110(2): 443–447.
- Lee CT, Puleston CO and Tuljapurkar S (2009) Population and prehistory III: Food-dependent demography in variable environments. *Theoretical Population Biology* 76(3): 179–188.
- Lee CT and Tuljapurkar S (2008) Population and prehistory i: Food-dependent population growth in constant environments. *Theoretical Population Biology* 73(4): 473–482.
- Lee RD (1986) Malthus and Boserup: A dynamic synthesis. In: Coleman D and Schofield R (eds) *The State of Population Theory: Forward From Malthus*. Oxford: Blackwell, pp.96–130.
- Lieth H (1973) Primary production: terrestrial ecosystems. *Human Ecology* 1(4): 303–332.
- Lima M, Gayo EM, Latorre C et al. (2020) Ecology of the collapse of Rapa Nui society. *Proceedings of the Royal Society B* 287(1929): 20200662.
- Liu Z, Lu Z, Wen X et al. (2014) Evolution and forcing mechanisms of El Ni  o over the past 21,000 years. *Nature* 515(7528): 550–553.
- Liu Z, Otto-Bliesner BL, He F et al. (2009) Transient simulation of last deglaciation with a new mechanism for Bolling-Allerod warming. *Science* 325(5938): 310–314.
- Lohse J, Black SL and Cholak LM (2014) Toward an improved archaic radiocarbon chronology for Central Texas. *Bulletin of the Texas Archeological Society* 85: 259–287.
- Lohse JC (2013) A glance through 13,500 years. In: Lohse JC (ed.) *Underwater Archaeology at 41HY147, the Terrace Locality at Spring Lake*. Archaeological Studies Report No. 28. San Marcos, TX: Center for Archaeological Studies Texas State University-San Marcos, pp.53–84.
- Luck GW (2007) A review of the relationships between human population density and biodiversity. *Biological Reviews* 82(4): 607–645.
- Mauldin RP, Hard RJ, Munoz CM et al. (2013) Carbon and nitrogen stable isotope analysis of hunter-gatherers from the coleman site, a late prehistoric cemetery in central Texas. *Journal of Archaeological Science* 40(2): 1369–1381.
- Mauldin RP, Nickels DL and Broehm CJ (2003) *Archaeological Testing to Determine the National Register Eligibility Status of 18 Prehistoric Sites on Camp Bowie, Brown County, Texas*. Archaeological Survey Report No. 334. San Antonio, TX: Center for Archaeological Research, The University of Texas at San Antonio.
- McAuliffe R, Mauldin RP and Black SL (2023) Central Texas plant baking. In: Koenig CW and Miller MR (eds) *Earth Ovens and Desert Lifeways: 10,000 Years of Indigenous Cooking in the Arid Landscapes of North America*. Salt Lake City, UT: University of Utah Press, pp.24–40.
- Meadows DH, Meadows DL, Randers J et al. (1972) *The Limits to Growth*. Rome, Italy: Club of Rome.
- Meyer PS and Ausubel JH (1999) Carrying capacity: A model with logistically varying limits. *Technological Forecasting and Social Change* 61(3): 209–214.

- Noy-Meir I (1975) Stability of grazing systems: An application of predator-prey graphs. *Journal of Ecology* 63: 459–481.
- Otto-Bliesner BL, Russell JM, Clark PU et al. (2014) Coherent changes of southeastern equatorial and northern African rainfall during the last deglaciation. *Science* 346(6214): 1223–1227.
- Palmisano A, Woodbridge J, Roberts CN et al. (2019) Holocene landscape dynamics and long-term population trends in the levant. *The Holocene* 29(5): 708–727.
- Puleston CO and Tuljapurkar S (2008) Population and prehistory II: Space-limited human populations in constant environments. *Theoretical Population Biology* 74(2): 147–160.
- Puleston C, Tuljapurkar S and Winterhalder B (2014) The invisible cliff: Abrupt imposition of Malthusian equilibrium in a natural-fertility, agrarian society. *PLoS One* 9(1): e87541.
- Puleston C and Winterhalder B (2019) Demography, environment, and human behavior. In: Prentiss AM (ed.) *Handbook of Evolutionary Research in Archaeology*. New York: Springer, pp.311–335.
- Quigg M (2000) Stable carbon and nitrogen isotope data on modern plant and animal resources from South Texas. In: Michael Quigg J and Cordova C (eds) *Data Recovery at 41ZP364: An Upland Campsite at Falcon Reservoir, Zapata County, Texas*. TRC Technical Report No. 22317. Austin, TX: TRC Mariah Associates, pp.353–364.
- Reimer PJ, Austin W, Bard E et al. (2020) The intcal20 northern hemisphere radiocarbon age calibration curve (0–55 cal kbp). *Radiocarbon* 62(4): 725–757.
- Richerson PJ and Boyd R (1998) Homage to Malthus, Ricardo, and Boserup toward a general theory of population, economic growth, environmental deterioration, wealth, and poverty. *Human Ecology Review* 4: 85–90.
- Richerson PJ, Boyd R and Bettinger RL (2009) Cultural innovations and demographic change. *Human Biology* 81(2-3): 211–235.
- Rick JW (1987) Dates as data: An examination of the Peruvian preceramic radiocarbon record. *American Antiquity* 52: 55–73.
- Robinson E, Bocinsky RK, Bird D et al. (2021) Dendrochronological dates confirm a late prehistoric population decline in the American Southwest derived from radiocarbon dates. *Philosophical Transactions of the Royal Society of London* 376(1816): 20190718.
- Robinson E, Van Strydonck M, Gelorini V et al. (2013) Radiocarbon chronology and the correlation of hunter-gatherer sociocultural change with abrupt palaeoclimate change: The middle mesolithic in the Rhine–Meuse–Scheldt area of northwest Europe. *Journal of Archaeological Science* 40(1): 755–763.
- Shennan S (2013) Demographic continuities and discontinuities in Neolithic Europe: Evidence, methods and implications. *Journal of Archaeological Method and Theory* 20(2): 300–311.
- Shennan S, Downey SS, Timpson A et al. (2013) Regional population collapse followed initial agriculture booms in mid-Holocene Europe. *Nature Communications* 4: 2486.
- Surovell TA, Byrd Finley J, Smith GM et al. (2009) Correcting temporal frequency distributions for taphonomic bias. *Journal of Archaeological Science* 36(8): 1715–1724.
- Tallavaara M, Eronen JT and Luoto M (2018) Productivity, biodiversity, and pathogens influence the global hunter-gatherer population density. *Proceedings of the National Academy of Sciences* 115: 1232–1237.
- Tallavaara M and Seppä H (2012) Did the mid-Holocene environmental changes cause the boom and bust of hunter-gatherer population size in eastern Fennoscandia? *The Holocene* 22(2): 215–225.
- Timpson A, Colledge S, Crema E et al. (2014) Reconstructing regional population fluctuations in the European Neolithic using radiocarbon dates: A new case-study using an improved method. *Journal of Archaeological Science* 52: 549–557.
- Wandsnider L (1997) The roasted and the boiled: Food composition and heat treatment with special emphasis on pit-hearth cooking. *Journal of Anthropological Archaeology* 16(1): 1–48.
- Williams AN (2012) The use of summed radiocarbon probability distributions in archaeology: A review of methods. *Journal of Archaeological Science* 39(3): 578–589.
- Winterhalder B, Baillargeon W, Cappelletto F et al. (1988) The population ecology of hunter-gatherers and their prey. *Journal of Anthropological Archaeology* 7(4): 289–328.
- Wong CI, Banner JL and Musgrove M (2015) Holocene climate variability in Texas, USA: An integration of existing paleoclimate data and modeling with a new, high-resolution speleothem record. *Quaternary Science Reviews* 127: 155–173.
- Wood J (1998) A theory of preindustrial population dynamics demography, economy, and Well-being in Malthusian systems. *Current Anthropology* 39(1): 99–135.
- Wood J (2020) *The Biodemography of Subsistence Farming: Population, Food and Family*, vol. 87. Cambridge: Cambridge University Press.
- Zahid HJ, Robinson E and Kelly RL (2016) Agriculture, population growth, and statistical analysis of the radiocarbon record. *Proceedings of the National Academy of Sciences* 113(4): 931–935.